



SECOND GENERATION RESTAURANT SPACE

NE Corner of 119th Street & Metcalf Avenue

11821-11831 Metcalf Avenue, Overland Park, Kansas



CALL FOR PRICING | 2,987 SF SPACE

DEMOGRAPHICS

	1 mile	3 miles	5 miles
Estimated Population	8,663	89,431	245,731
Avg. Household Income	\$128,761	\$159,265	\$156,665

- 2,987 SF second generation restaurant space
- Great building signage facing 119th Street
- Highly accessible location just seconds from 69 Highway and Interstate 435
- One mile away from Blue Valley North High School
- Join K-Machos, IHOP, The Vitamin Shoppe, KC Craft Ramen, Walmart, Kohl's, Best Buy, and PetsMart
- Other nearby tenants include: Whole Foods, Chili's, Nordstrom Rack, Five Below, and Pan Asia Supermarket



CLICK HERE TO VIEW MORE LISTING INFORMATION

For More Information Contact:

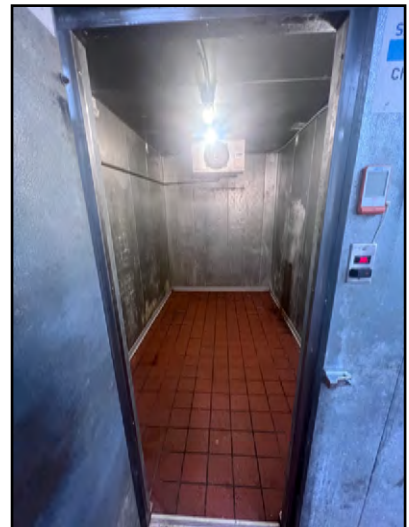
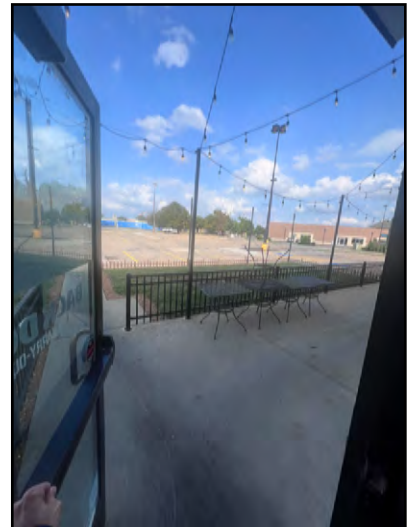
Exclusive Agents

PAUL MASSALI | 816.412.7409 | pmassali@blockandco.com

DAVID BLOCK | 816.412.7400 | dblock@blockandco.com



PHOTOS



NEIGHBORING TENANTS





SECOND GENERATION RESTAURANT SPACE

NE Corner of 119th Street & Metcalf Avenue

11821-11831 Metcalf Avenue, Overland Park, Kansas

AERIAL



SECOND GENERATION RESTAURANT SPACE

NE Corner of 119th Street & Metcalf Avenue

11821-11831 Metcalf Avenue, Overland Park, Kansas

AERIAL

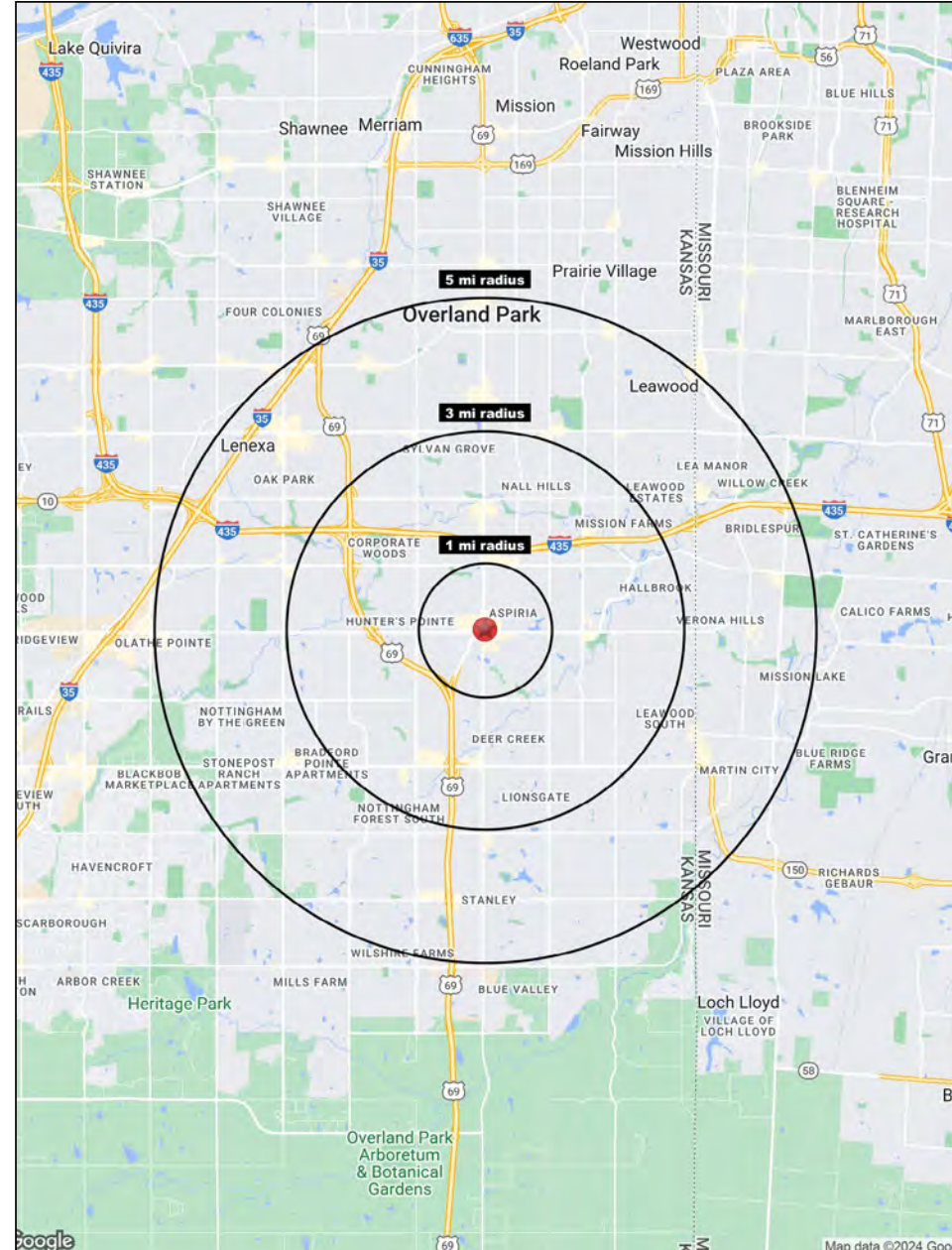
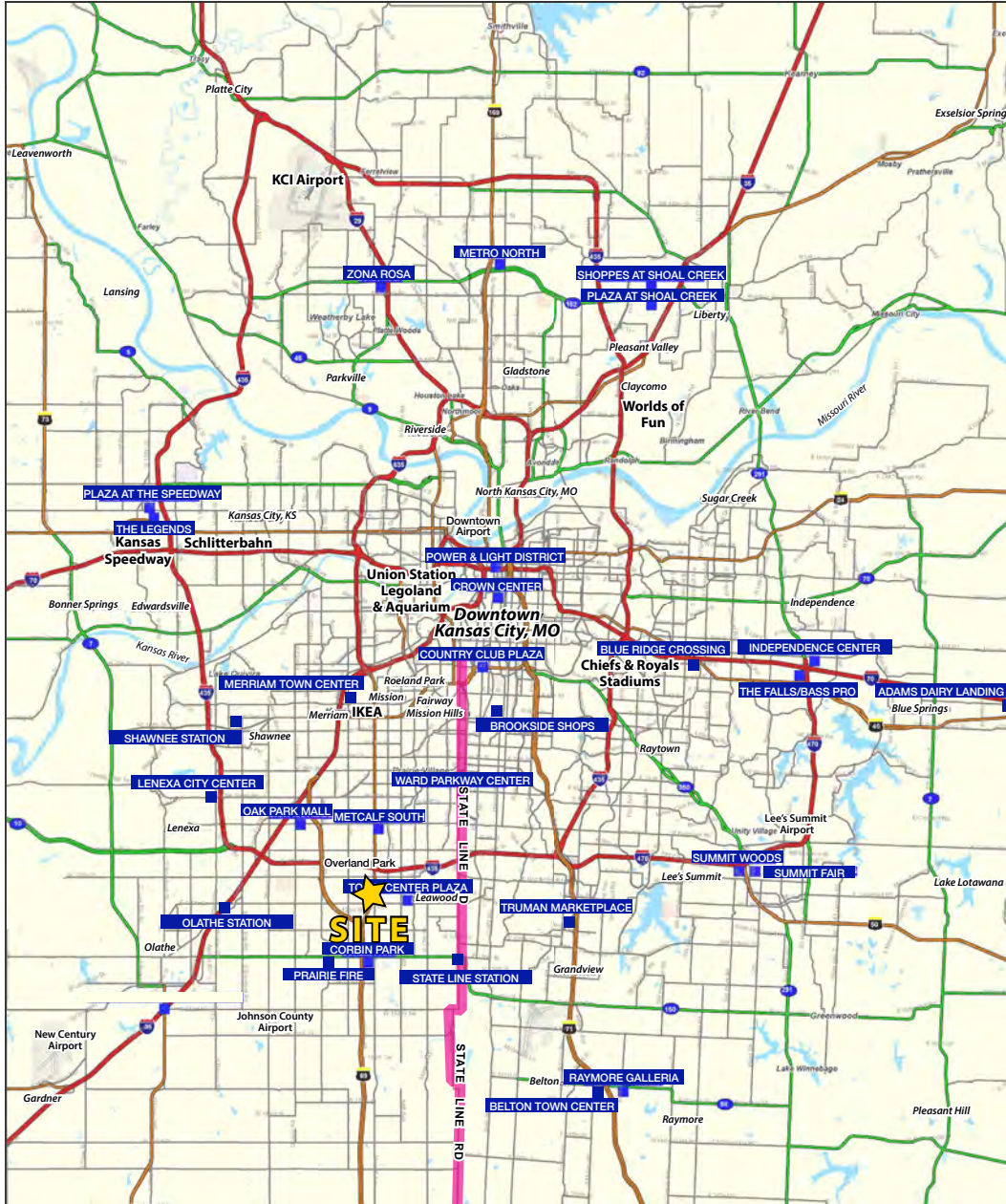




SECOND GENERATION RESTAURANT SPACE

NE Corner of 119th Street & Metcalf Avenue

11821-11831 Metcalf Avenue, Overland Park, Kansas





SECOND GENERATION RESTAURANT SPACE

NE Corner of 119th Street & Metcalf Avenue

11821-11831 Metcalf Avenue, Overland Park, Kansas

11821-11831 Metcalf Avenue Overland Park, KS 66210	1 mi radius	3 mi radius	5 mi radius
Population			
2024 Estimated Population	8,663	89,431	245,731
2029 Projected Population	9,297	93,773	251,680
2020 Census Population	7,969	85,244	242,073
2010 Census Population	7,446	77,884	222,718
Projected Annual Growth 2024 to 2029	1.5%	1.0%	0.5%
Historical Annual Growth 2010 to 2024	1.2%	1.1%	0.7%
2024 Median Age	42.1	40.0	39.7
Households			
2024 Estimated Households	4,074	40,265	106,420
2029 Projected Households	4,485	42,995	110,300
2020 Census Households	3,646	36,890	101,072
2010 Census Households	3,278	33,023	91,687
Projected Annual Growth 2024 to 2029	2.0%	1.4%	0.7%
Historical Annual Growth 2010 to 2024	1.7%	1.6%	1.1%
Race and Ethnicity			
2024 Estimated White	81.9%	81.3%	79.8%
2024 Estimated Black or African American	4.1%	5.1%	6.8%
2024 Estimated Asian or Pacific Islander	4.6%	5.0%	5.0%
2024 Estimated American Indian or Native Alaskan	0.2%	0.3%	0.3%
2024 Estimated Other Races	9.2%	8.4%	8.1%
2024 Estimated Hispanic	10.9%	9.0%	8.6%
Income			
2024 Estimated Average Household Income	\$128,761	\$159,265	\$156,665
2024 Estimated Median Household Income	\$103,464	\$119,598	\$118,204
2024 Estimated Per Capita Income	\$60,878	\$71,836	\$67,947
Education (Age 25+)			
2024 Estimated Elementary (Grade Level 0 to 8)	0.5%	0.8%	1.0%
2024 Estimated Some High School (Grade Level 9 to 11)	1.9%	1.1%	1.3%
2024 Estimated High School Graduate	8.6%	9.5%	11.6%
2024 Estimated Some College	15.3%	15.7%	16.4%
2024 Estimated Associates Degree Only	5.5%	5.1%	6.3%
2024 Estimated Bachelors Degree Only	37.2%	37.6%	36.9%
2024 Estimated Graduate Degree	31.1%	30.2%	26.4%
Business			
2024 Estimated Total Businesses	866	6,032	12,330
2024 Estimated Total Employees	19,145	106,238	184,190
2024 Estimated Employee Population per Business	22.1	17.6	14.9
2024 Estimated Residential Population per Business	10.0	14.8	19.9

©2024, Sites USA, Chandler, Arizona, 480-491-1112 Demographic Source: Applied Geographic Solutions 5/2024, TIGER Geography - RS1

